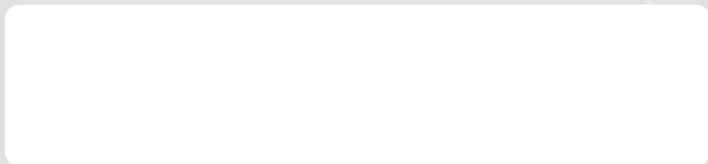


## APPLICATIONS

|  |  |  |  |  |  |  |  |  |
|--|--|--|--|--|---|--|--|--|
| Motorbikes with air or liquid cooling systems  | ✓  | ✓  | ✓  | ✓  | ✓   | ✓  | ✓  | ✓  |
| Motorbikes assembled with separate and built-in gearbox                                    | ✓  | ✓  | ✓  | ✓  | ✓   | ✓  | ✓  | ✓  |
| Motorbikes equipped with dry or liquid clutch  | ✓  | ✓  | ✓  | ✓  | ✓   | ✓  | ✓  | ✓  |
| Motorbikes with a catalytic converter and without a catalytic converter                    | ✓  | ✓  | ✓  | ✓  | ✓   | ✓  | ✓  | ✓  |
| Four-stroke scooters and city motorbikes   |  |  | ✓  | ✓  | ✓   |  |  |  |
| Four-stroke naked bikes, choppers, off-road and sport bikes                                |  |  | ✓  | ✓  |   |  |  |  |
| Motorcycles used under racing conditions   | ✓  | ✓  |  |  |   |  |  |  |
| Two-stroke gasoline-propelled motors with mixture lubrication and oil injection (autolube) |  |  |  |  |   |  | ✓  | ✓  |
| Modern two-stroke mopeds and scooters  |  |  |  |  |   |  | ✓  | ✓  |

YOUR PARTNER:



AUTHORIZED DISTRIBUTOR

## IMPROVE THE PERFORMANCE OF YOUR MOTORBIKE!

MOL Dynamic MOTO motorbike motor oils also for extreme performance



# ELASTIC LAYER TECHNOLOGY

## ELASTIC LAYER TECHNOLOGY FOR EXTREME PERFORMANCE

Elastic Layer Technology can resist extreme impact as a result of its special additive system and our synthetic motor oils are able to adjust to any driving style and variable driving conditions including extreme conditions or performance. The said oils form an elastic protective layer between metallic surfaces as a result of their special components. They can therefore adjust to the vehicle dynamics and ensure a better and more balanced performance from the motor, while providing full protection to the clutch.

## PROVEN HIGH PERFORMANCE UNDER RACING CONDITIONS

The impact of forces hitting modern motorbike oils are almost identical with those measured with race bikes, so Elastic Layer Technology additive system has been tested under racing conditions. This test took 99 hours and the bikes covered 3,240 rounds on the race track i.e. more than 13,000 km, including more than 90,720 uses of clutch and transmission. During testing the Elastic Layer Technology additive components delivered a fantastic performance. The motor delivered maximum performance throughout examination, while the pistons remained almost fully sediment-free and the motor abrasion, including the clutch remained inconspicuous, consequently it delivered an excellent driving experience with outstanding performance.



**AFTER**  
**13,000 KM**  
**COVERED ON THE RACE TRACK AND**  
**90 720 GEAR SHIFTS**  
**THE DEGREE OF ABRASION WAS NEGLIGIBLE**  
**THANKS TO THE ELASTIC LAYER TECHNOLOGY**

## MOL DYNAMIC MOTO 4T RACING PRO 5W-60

Synthetic motorcycle engine oil with extreme viscosity, formulated with the latest additive technology for street and sport motorcycles, quads with dry and wet clutch, driven under severe or racing conditions.

### Outstanding shear stability

Retain favourable properties for a long time even under high loads and shearing stress

### High viscosity index

Low starting torque on cold starts, stable lubricant film at high operating temperatures

### Optimum friction characteristics

Optimum torque transmission between the clutch plates

Synthetic engine oil -  
for high-performance  
four-stroke motor-  
cycles driven under  
severe conditions



## MOL DYNAMIC MOTO 4T RACING 10W-50

High-end synthetic motorcycle engine oil for modern, high-performance, four-stroke motorcycles. Ideal for all high-performance street and sport motorcycles, quads with dry and wet clutch, driven under severe or racing conditions.

### Outstanding shear stability

Retain favourable properties for a long time even under high loads and shearing stress

### High viscosity index

Low starting torque on cold starts, stable lubricant film at high operating temperatures

### Optimum friction characteristics

Optimum torque transmission between the clutch plates

Synthetic engine oil -  
for high-performance  
four-stroke motor-  
cycles driven under  
severe conditions





## MOL DYNAMIC MOTO 4T HP 10W-40

High-performance synthetic engine oil for modern four-stroke motorcycles with outstanding engine protection properties and resistance to intensive thermal and mechanical shear stress.

### Outstanding shear stability

Retain favourable properties for a long time even under high loads and shearing stress

### Outstanding detergent-dispersant properties

Keep the engine clean for a long time, prevent the sedimentation of solid impurities

### Optimum friction characteristics

Optimum torque transmission between the clutch plates

Synthetic engine oil -  
for high-performance  
four-stroke motor-  
cycles driven under  
severe conditions



## MOL DYNAMIC MOTO 4T STREET 10W-40

High-performance, semi-synthetic engine oil for modern four-stroke motorcycles. Perfect choice for lubricating the engines of naked bikes, choppers, touring and adventure motorcycles. Recommended for lubricating motorcycle engines with or without catalytic converters and motorcycles with wet clutches.

### Outstanding shear stability

Retain favourable properties for a long time even under high loads and shearing stress

### Optimum friction characteristics

Optimum torque transmission between the clutch plates

### Outstanding detergent-dispersant properties

Keep the engine clean for a long time, prevent the sedimentation of solid impurities

Semi-synthetic  
engine oil for  
four-stroke street  
motorcycles



## MOL DYNAMIC MOTO 4T SCOOTER 10W-40

High-performance, semi-synthetic engine oil for four-stroke scooters. Highly recommended for new and older four-stroke naked bikes, choppers, touring and adventure motorcycles.

### Outstanding shear stability

Retain favourable properties for a long time even under high loads and shearing stress

### Optimum friction characteristics

Optimum torque transmission between the clutch plates

### Outstanding detergent-dispersant properties

Keep the engine clean for a long time, prevent the sedimentation of solid impurities

Semi-synthetic  
engine oil for modern  
four-stroke scooters



## MOL DYNAMIC MOTO 4T GP 20W-50

It is specifically recommended for motorcycles where high viscosity is required (e.g. Harley-Davidson, Buell). It is also excellent for lubricating the engines of older motorcycles with high mileage.

### High operating viscosity

Reduce oil consumption and improve internal engine sealing

### Excellent lubricant film strength

Reliable engine protection even for worn and older engines

### Optimum friction characteristics

Optimum torque transmission between the clutch plates

Four-stroke engine oil  
for older motorcycles  
with high mileage



## MOL DYNAMIC MOTO 2T

Premium quality, synthetic, catalyst-friendly, pre-dissolved engine oil for two-stroke, mixture lubricated and oil-injected (autolube) engines. It can be used up to a 1:50 mixing ratio, following engine manufacturers' specifications.

### Contain pre-dissolving additive

Perfectly mix with fuel

### Outstanding cleaning action

Prevent spark plug faults, delay clogging of the exhaust system

### Low ash content

Reduce engine smoke and exhaust emissions

### Excellent wear protection

Long engine life even under sustained high loads



Synthetic two-stroke engine oil for mixture lubricated and oil-injected engines

## MOL DYNAMIC SPRINT 2T

High-performance, catalyst-friendly, pre-dissolved engine oil for mixture lubricated and oil-injected (autolube) two-stroke engines.

### Contain pre-dissolving additive

Perfectly mix with fuel

### Outstanding cleaning action

Prevent spark plug faults, delay clogging of the exhaust system

### Low ash content

Reduce engine smoke and exhaust emissions

### Excellent wear protection

Long engine life even under sustained high loads



Catalyst-friendly engine oil for two-stroke, mixture lubricated and oil-injected engines

## OUR PRODUCT PORTFOLIO

4T



MOL Dynamic Moto 4T Racing Pro



MOL Dynamic Moto 4T Racing



MOL Dynamic Moto 4T HP



MOL Dynamic Moto 4T Street



MOL Dynamic Moto 4T Scooter



MOL Dynamic Moto 4T GP

|                       |           |           |           |                |                |                |
|-----------------------|-----------|-----------|-----------|----------------|----------------|----------------|
| Viscosity             | 5W-60     | 10W-50    | 10W-40    | 10W-40         | 10W-40         | 20W-50         |
| Base oil              | synthetic | synthetic | synthetic | semi-synthetic | semi-synthetic | semi-synthetic |
| API performance level | API SL    | API SL    | API SN    | API SG         | API SG         | API SG         |
| JASO specification    | MA-2      | MA-2      | MA-2      | MA-2           | MA-2           | MA-2           |

2T

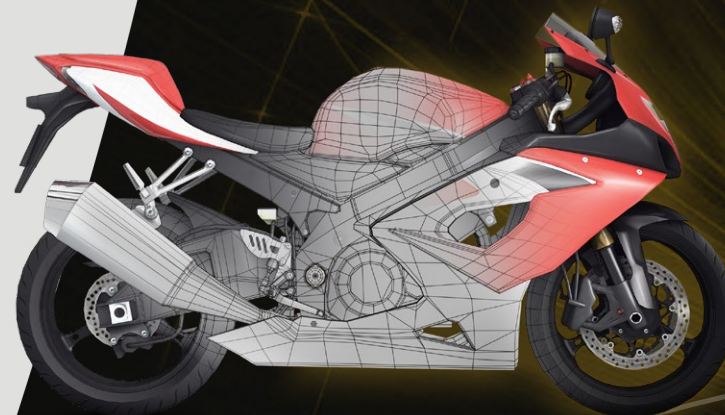


MOL Dynamic Moto 2T



MOL Dynamic Sprint 2T

|                    |           |             |
|--------------------|-----------|-------------|
| Viscosity          | 2T        | 2T          |
| Base oil           | synthetic | mineral oil |
| JASO specification | FD        | FD          |



**Guaranteed reliability:** MOL Dynamic MOTO 4T motor oils can meet the rigorous JASO MA-2 performance category, and therefore meet the requirements of modern, small-size motors that use more modern technology.